

# THE TWELVE DAYS OF CHRISTMAS

## A Partridge in a Pear Tree

What is the name of the actor that portrays Alan Partridge on TV?

## Two Turtle Doves

Alphabetically what are the names of the first TWO Teenage Mutant Ninja Turtles?

## Three French Hens

Solve these anagrams to reveal THREE classic French poultry dishes.

- UNCHECKED CORN BOIL
- GALA UNCORKED
- CAKES IN CHURCHES

## Four Calling Birds

Can you identify these FOUR British songbirds?



## Five Gold Rings

What are the colours of the FIVE rings on the Olympic flag?

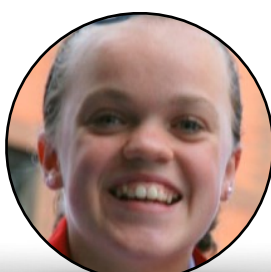
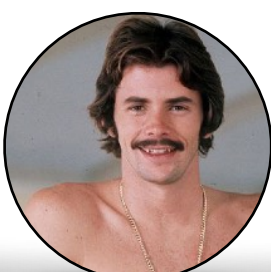
## Six Geese a-Laying

In what language do the following SIX words translate as EGG?

- a. OEUF. b. HUEVO. c. YAI. d. HUA MANU. e. WY. f. MUNA.

## Seven Swans a-Swimming

Can you name these SEVEN British Olympic swimmers?



# THE TWELVE DAYS OF CHRISTMAS

## Eight Maids a-Milking

The milk from which animal is used to make the following EIGHT cheeses?

- a. CHAIGNOL (France) b. JARLSBERG (Norway) c. CARAVANE (Mauritania) d. DANISH BLUE (Denmark)  
e. ROQUEFORT (France) f. STINKING BISHOP (England) g. MOZZARELLA (Italy) h. PULE (Serbia)



## Nine Ladies Dancing

Can you name these NINE ladies who were winners or runners-up in TV's Strictly Come Dancing?

## Ten Lords a-Leaping

Can you name the TEN works of fiction in which these Lords appear?

- a. LORD GREYSTOKE
- b. LORD MACDUFF
- c. LORD PETER WIMSEY
- d. LORD FARQUAAD
- e. LORD VOLDEMORT
- f. LORD ASRIEL
- g. LORD EDDARD STARK
- h. LORD DRINIAN
- i. LORD EMSWORTH
- j. LORD CELEBORN

## Eleven Pipers Piping

Can you identify these ELEVEN wind instruments that have had the vowels removed?

- |             |           |
|-------------|-----------|
| a. FLT      | g. B      |
| b. BGPPS    | h. TB     |
| c. FRNCHHRN | i. CRNGLS |
| d. PCCL     | j. RCRDR  |
| e. HRMNC    | k. TRMBN  |
| f. TRMPT    |           |

## Twelve Drummers Drumming

Can you name the groups most associated with these TWELVE drummers?

- |                  |                     |
|------------------|---------------------|
| a. Ringo Starr   | g. Phil Collins     |
| b. Will Champion | h. Stewart Copeland |
| c. Lars Ulrich   | i. Jon Bonham       |
| d. Don Henley    | j. Keith Moon       |
| e. Roger Taylor  | k. Ginger Baker     |
| f. Charlie Watts | l. Dave Grohl       |

# THE TWELVE DAYS OF CHRISTMAS

1		7a		9g		11i	
2a		7b		9h		11j	
2b		7c		9i		11k	
3a		7d		10a		12a	
3b		7e		10b		12b	
3c		7f		10c		12c	
4a		7g		10d		12d	
4b		8a		10e		12e	
4c		8b		10f		12f	
4d		8c		10g		12g	
5a		8d		10h		12h	
5b		8e		10i		12i	
5c		8f		10j		12j	
5d		8g		11a		12k	
5e		8h		11b		12l	
6a		9a		11c			
6b		9b		11d			
6c		9c		11e			
6d		9d		11f			
6e		9e		11g			
6f		9f		11h			